

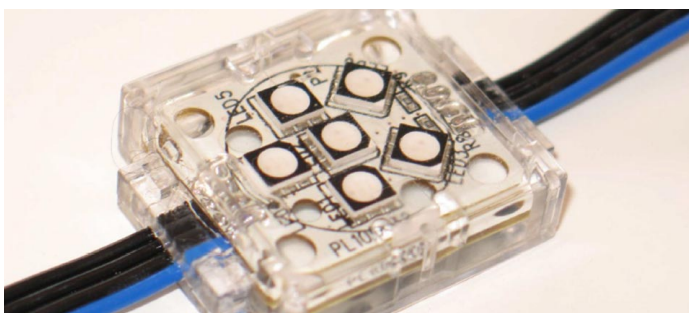


Freeform LED pixel designed for low resolution architectural media facades and shaped displays.

Pixel|X16 Multi

KiboWorks designs and manufactures many types of LED Dots and products for curtain walls. The X16 Multi is a string of encapsulated, super bright, RGB LEDs and are fully customizable and can be manufactured to your specifications. Each pixel on the string is individually addressable for independent control of colour, special effects, and animation using KiboWorks Stream™ or DMX512 protocols. The 16-bit colour provides a rich selection of hues and brightness of colours ranging from soft pastels to saturated rich tones.

High reliability, quality design utilizing encapsulated modules, UV stabile plastic and long life electrical components, makes it ideal for installations where service is difficult and failure free operation is



required. The X16 Multi's simplicity and thin design makes it ideal for the final display surface to be less than 11mm thick. Its size at 35mm by 35mm makes it a perfect fit for international curtain wall designs and its clear low contrast nature makes it virtually disappear during the day and night. LED count, wattage, white temperature and brightness can be varied to client requirements.

KiboWorks X16 Multi is a perfect solution for integrating LED video technology into façades, stage designs, store fronts, ceilings or any other structure, indoors or out. The X16 Multi reliability is based on many years of electronics experience and development with products still in the field after 10 years of constant use.

Kiboworks has designed and developed leading edge led products over the past 15 years and as a leading innovator has offered long term commitment on its products, as far back as 2004 Kiboworks was offering 10 year warranty on its products and systems. X16 Multi continues this commitment to quality and customer service with 10 year warranty covering any defects in material and performance or workmanship and provides a full replacement or repair within the warranty period.

Pixel|X16 Multi Features

- Individually controllable Dots
- 42 lumens per dot
- IP66 environmental rating
- ULV94, UL8750 and UL-UV stabile
- Artnet compatible
- Pixel data grouping or multiplier
- Five gamma correction options
- 16 bit three channel colour control
- Pixel by Pixel colour correction
- Nichia Diodes
- White CCT from 2700 -8000K
- 12 to 24VDC class II power
- 10 years warranty



KiboWorks
Custom LED Technology

9580 Oak Avenue Parkway
Suite 7-211 | Folsom | CA 95630
+1-916-988-8921
John@kiboworks.com

KiboWorks, TeamKibo,
KiboVision, KiboMenu,
The Translator
Are Trademarks of KiboWorks.



Freeform LED pixel designed for low resolution architectural media facades and shaped displays.

Pixel|X16 Multi

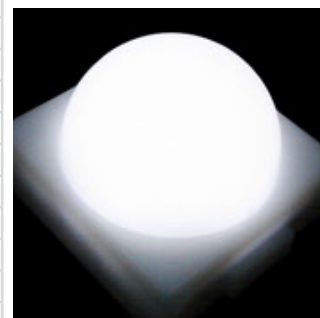
Physical	
Pixel Dimensions	35 x 53 x 10mm (1.4 x 1.4 x 0.39 in)
Weight	2.0 kg (4.4 lbs.) for 50 Dots, 100 mm (4.0 in.) spacing
Maximum number of pixels per string	50 RGB Pixels
Standard pixel spacing (pitch):	100mm (4.0 in)
Minimum pixel spacing (pitch):	70mm (2.7 in)
Maximum pixel spacing (pitch):	305mm (12.0 in)
Electrical	
AC Voltage Input	85VAC - 264VAC
Operating voltage	12-24VDC
Power & Data Feed	KiboNode integrated power & data
Peak power consumption 12VDC	5.00 W per Dot
Typical power consumption 12VDC	1.50 W per Dot
Control	
Primary Control	KiboWorks Stream Protocol
Additional control options	DMX ArtNet Serial RS485 Siti MD412 Dot Protocol
Control Colour Resolution	16 Bit per LED 48 Bit per RGB Dot
Channels	3 per RGB Dot
DMX Options	DMX Channel Grouping DMX Channel Multiplier
Colour & Intensity Calibration	Dot level
Gamma	5 Levels of correction
Optical	
Led Manufacturer	Nichia
LED beam spread	110°
Rated Life	75,000hrs
Lumen output total	42 lumen Standard
Construction	
Housing	Clear polycarbonate, clear silicone filled
Interconnecting cable	4 x 20AWG
Connections	
Power & Data	Via KiboWorks Mutt X16 Dot Protocol Converter 4 Pin phenix
Mutt to Dot	IDC 4 contact connectors for flat cable



KiboNode



Mutt Protocol Converter



KiboWorks
Custom LED Technology

9580 Oak Avenue Parkway
Suite 7-211 | Folsom | CA 95630
916-988-8921

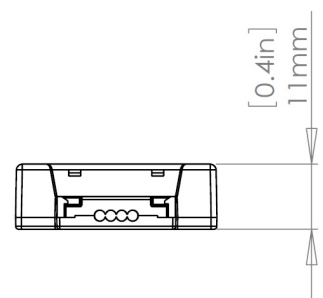
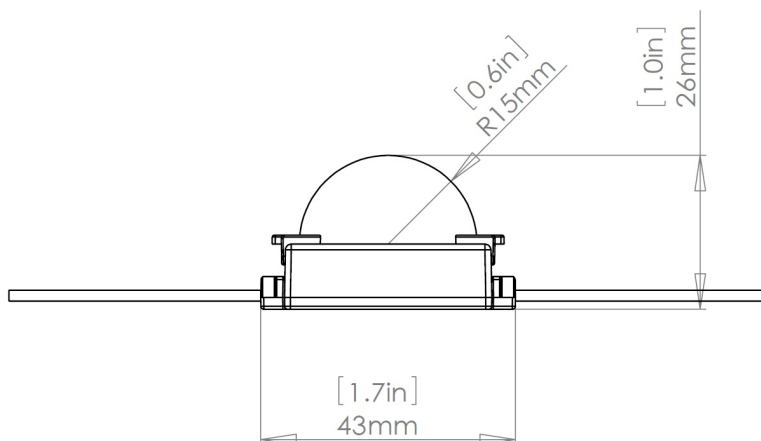
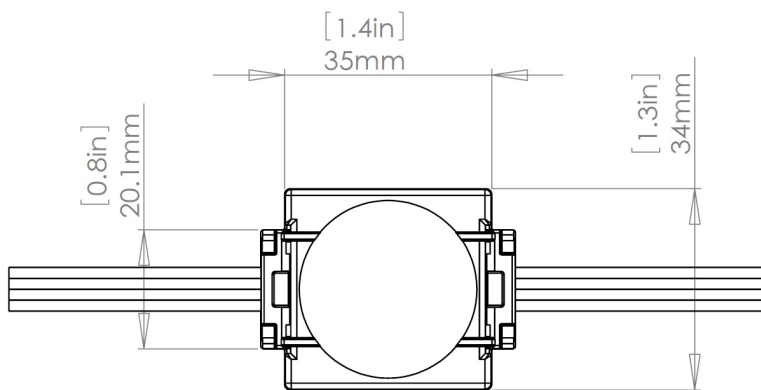
John@kiboworks.com

KiboWorks, TeamKibo,
KiboVision, KiboMenu,
The Translator
Are Trademarks of KiboWorks.



Freeform LED pixel designed for low resolution architectural media facades and shaped displays.

Pixel|X16 Multi



KiboWorks
Custom LED Technology

9580 Oak Avenue Parkway
Suite 7-211 | Folsom | CA 95630
916-988-8921

John@kiboworks.com

KiboWorks, TeamKibo,
KiboVision, KiboMenu,
The Translator
Are Trademarks of KiboWorks.